

**THE ATTACHMENT KIT COMES WITH ALL THE TOOLS YOU WILL NEED TO CLEAN YOUR HOME**

The attachment kit comes with a quiet-operating power-head that features a non-slip, cogged belt drive with chevron brush. This motorized carpet nozzle comes with a headlight and quick release wand system for easy removal of wands. In addition, the kit comes equipped with 30-foot, 4-wire swivel hose and Power-Touch® handle with on/off switch, bare floor tool, upholstery tool, dusting brush, crevice tool, telescopic chrome accessory wand, three tool caddy and hose hanger. This package comes with all you need to clean your home.



With only a lightweight hose and nozzle to carry around, the central vacuum is ideal for people with poor health. Simply plug into the built-in inlet and vacuum - no additional canisters, cords or outlets to worry about. It is also incredibly quiet, since the power unit, already hidden away in another room, has unique baffles, sound absorbing lids, and exhaust muffler components to cut noise by more than 10 decibels. The bags (30% larger than similar sized units) hold up to 7 gallons of waste, dramatically minimizing the number of times you will ever need to change a bag.

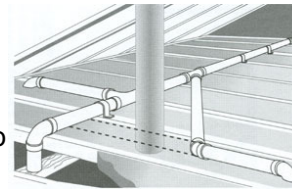
**KITCHENS AND BATHROOMS CAN BENEFIT FROM THE EASY TO USE PAN-VAC UNDER THE COUNTER VACUUM INLET**

No more stooping to use a dustpan. The perfect idea for any room with hard surface floors like, kitchens, pantries, laundry rooms or bathrooms, the Pan Vac Comes in White, Ivory, or Black and can be installed in most new or existing homes.



**A Must For All New Construction**

Our Central Vacuum Systems can be installed in any new or preexisting homes with little to no problems or disturbance to the home. During the installation the tubing for the vacuum system is piped from the inlets through the walls or floors and into the attic or crawlspace, basement, or other unoccupied spaces of the home by using special 2 inch Interior Diameter (ID) PVC tubing with special long sweeping elbow, T's and Y's for maximum air flow also to avoid clogging. The low voltage control wiring is installed along the tubing at the time of installation allowing for point of use control of the vacuum system the three position switch at the end of the vacuum hose allows for on off and power brush control. Our vacuum system will offer many years of use to you and your home. Cleaning your home and the air in it faster easier and better, improving the indoor air quality as you clean. Additional attachments and other cleaning tools are available for cleaning your home. All work is guaranteed, our vacuum systems have a two year limited warranty on the vacuum unit.

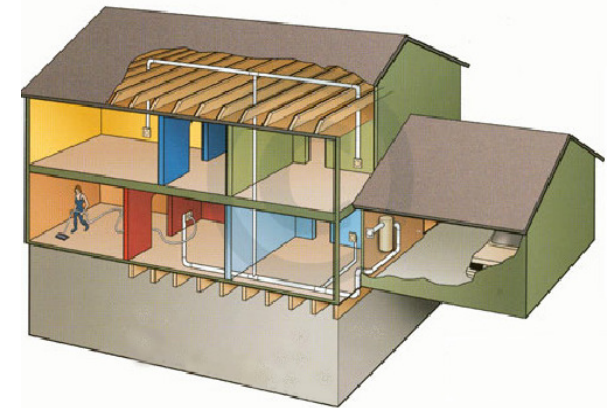


All rights reserved © Copyright (ASR) 2006

**CLEANING YOUR HOME AND THE AIR IN IT!**

**MAKE THE MOST OUT OF YOUR EFFORTS! CLEAN YOUR HOME THE RIGHT WAY.**

**WITH A WHOLE HOUSE CENTRAL VACUUM SYSTEM!**



**AIR SYSTEMS RESTORATION, INC.**

**Augusta, GA (706) 651-1152**

**Columbia, SC (803) 779-1153**

**Fax (706) 651-1150**

[www.air-systems-restoration.com](http://www.air-systems-restoration.com)

Residential • Commercial • Industrial  
Air Duct Cleaning • Dryer Duct Cleaning • Exhaust System  
Cleaning • Central Vacuum Systems • Ultraviolet Lights •  
Indoor Air Consultations • Microbial Sampling • Other IAQ  
Products and Services

# YOU CAN MAKE CLEANING YOUR HOME FASTER, EASIER AND BETTER

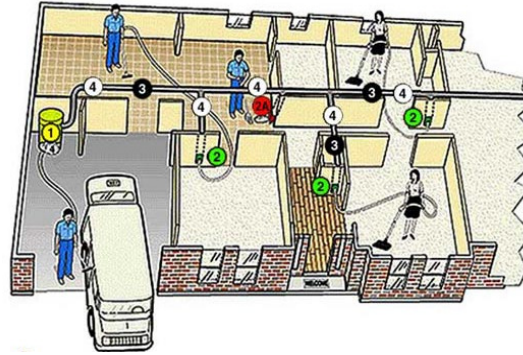
How do you clean your home? Like most people, you dust, you vacuum and still you find dust on your furniture, just hours after you're done cleaning. Like most people, you have tried different cleaning products and cleaning tools but still the dust comes back time and time again. Have you ever considered that the biggest problem with dust is it stays in the air for hours after it's been disturbed while using most common upright or canister vacuums?

1. Most upright and canister vacuums use thin walled paper-bag filters to catch the dirt and dust they pick up.
2. Most vacuum cleaners use paper bag type filters that only stop about 65% of the dust and debris they collect.
3. The small, fine dust and debris the paper bag filters don't stop is blown out of the vacuum and into the air you and your family breathe causing health problems and nuisance dust.
4. Upright and canister vacuums are big, bulky, noisy, hard to store and just don't do the job you would like them to do.

Central vacuuming is the healthiest way for allergy sufferers to remove dust, dust mites and dander from their home. The system vacuums the allergens out and away from the living space. Regular vacuum cleaners allow dust and bacteria to sit inside the bag - often molding for months at a time. The mold, bacteria and dust particles are then redistributed back into the air in your home every time you turn it on. With the central vacuum, dust and odors have no chance to recalculate, as they are vented away from your home or living spaces every time you use it.

# CENTRAL VACUUM SYSTEMS WHAT ARE THEY & HOW DO THEY WORK?

The "Image" below is of a partial cut away representation of a common installation of a central vacuum system in an average home.



- 1 The central power unit is located in an out-of-the-way place such as the attic, garage, basement, crawlspace or utility room.
- 2 To vacuum, simply insert the hose into one of the wall inlet valves that are installed in strategic locations throughout the house.
- 2A. An optional Automatic Dust Pan in high-spill areas is ready to whisk dirt away by just flipping a lever.
- 3 The vacuum tubing runs behind/inside walls from the inlet valves to the attic or crawlspace and back to the power unit.
- 4 Dust and dirt are removed from the living space and travel through the tubing to the power unit receptacle and all discharge air is piped out of the living space attic, garage, basement, crawlspace or utility room to outside the home.

# CENTRAL VACUUM SYSTEMS MAKE CLEANING YOUR HOME EASIER!

With the use of the 30 foot crush proof hose a Central Vacuum System will allow you to clean up to 700 sq feet around each inlet port without stopping or moving to another port.



The central vacuum system and the accessory kit can be installed with little to no disturbance to most homes. The central power unit features a 460-air watt motor with ABS construction, which is dent and rust resistant. The 7-gallon dirt container is self-cleaning and comes equipped with a Triumph HEPA performance filter, automatic utility/inlet valve, dirt level window, 6-foot power cord and a mounting bracket for ease of installation.